

# ALUMINIUM SLAB DECK FORMWORK SYSTEM

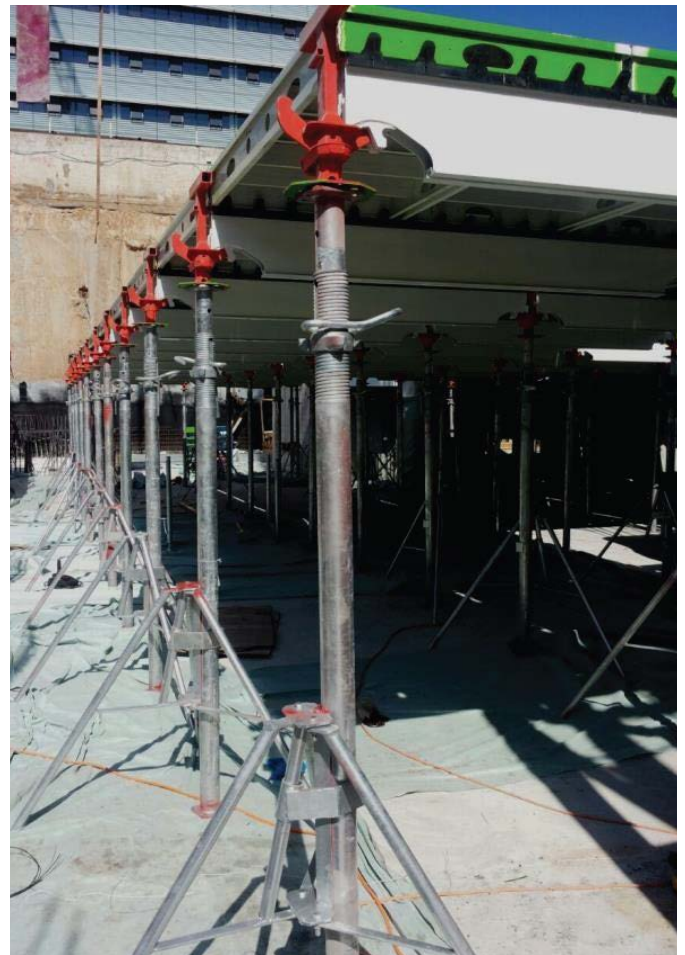
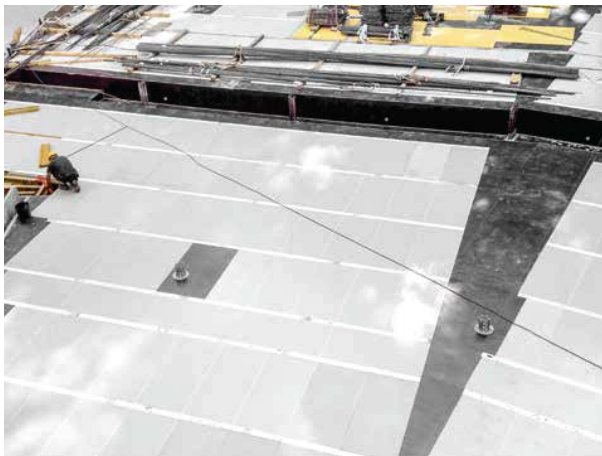
## Features of Slab Deck

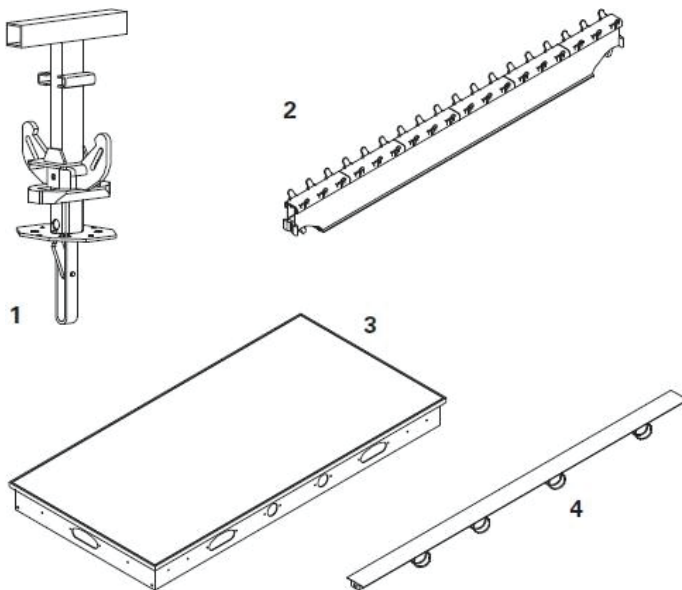
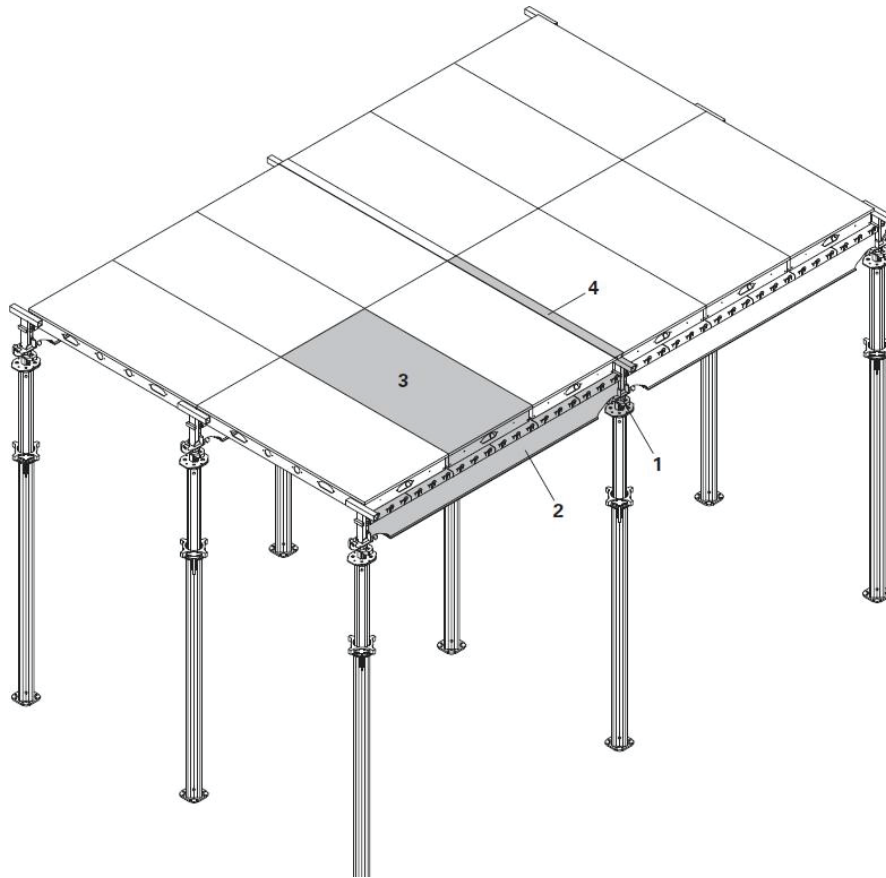
Proven, fast slab formwork made of high-strength aluminium.

Proven aluminium slab formwork system for sensationality fast formwork erection.

cost-effective slab formwork with numerous advantages for the user.

Formwork system with drophead for early stripping.





- 1 Drophead SFK
- 2 Main Beam SLT 225
- 3 Panel SDP
- 4 Cover Strip SAL

## FEATURES

K-DECK is a panel slab formwork system used for constructing slab thicknesses up to 95 cm. Depending on the slab thickness and concrete strength, the K-DECK drophead allows striking to take place after

only 1 day (see table

containing minimum concrete strength and guide values).

The panels and main beams are made of aluminium which means they are very light.

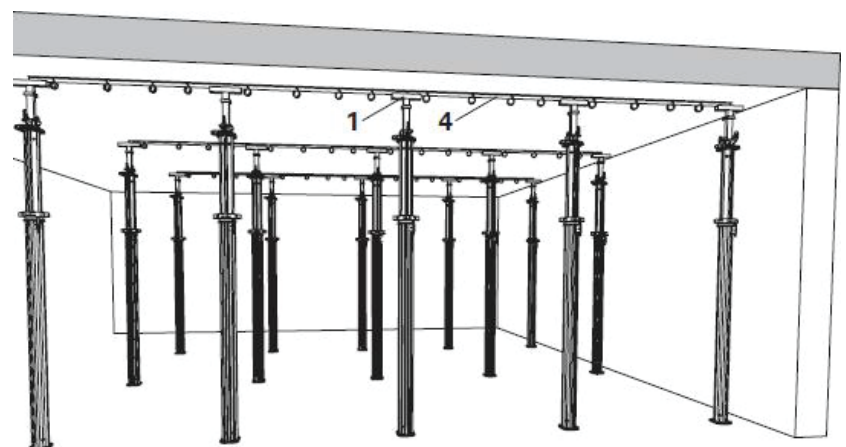
Accessories for infill areas, shuttering around columns and the slab edges are also available.



Due to early striking, the panels and main beams can be used for the new concreting cycle.

Only the props with dropheads and the cover strips remain in position until the full concrete strength has been reached.

The on-site material requirements are therefore clearly reduced.



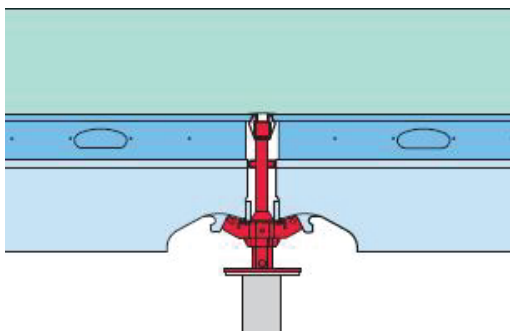
**The K-DECK system features a drophead.**

Striking can therefore be carried out after only one day (depending on the slab thickness and strength of concrete). For the contractor, this means less on-site formwork materials as beams and panels have been freed up for the next concreting cycle.

Striking after a short time means that striking and cleaning is also much easier because the panels separate from the concrete effortlessly. The drophead principle enables you to work more flexibly.

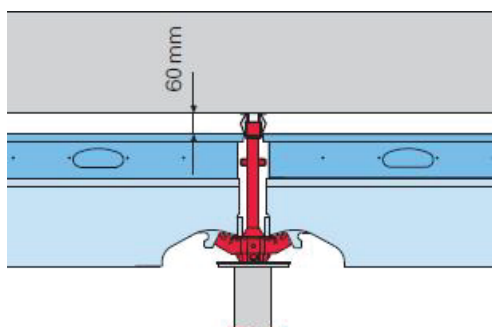
For instance, early striking during poor weather or if personnel are available.

**Shuttered**



The panels and cover strips form the soffit of the concrete.

**Drophead lowered**



The cover strips and dropheads remain in position. While the panels and beams are struck.

## Main beam of K-DECK reduces the number of props

The K-DECK main beam with powder coating and plastic rack has been designed to ensure that only a minimum of cleaning is required.

The main beam lies protected under the panels. This reduces the amount of cleaning needed.



Only 0.29 props per square metre of slab are needed.

This corresponds to an area of 2.30 x 1.50m (3.45 m<sup>2</sup>) supported by just one prop. Fewer props save time and leave more space.

The horizontal transport of formwork materials or storing of construction materials (e.g. bricks) is problem-free with these large prop spacing.



**K-DECK components are made of aluminium to make them very light.**



No part weighs more than 17kg.

Thanks to the low individual weights, K-DECK allows easy and tireless shuttering and striking.

K-DECK has small and manageable parts.

The largest element measures only 150 x 75 x 12 cm. This allows optimum horizontal transport between the rows of props and through door openings.



**Main components:** Drophead SFK , Prophead SSK

**Panel SDP in the following sizes:** 150 x 75, 150 x 50, 150 x 37.5, 75 x 75, 75 x 50, 75 x 37.5 (cm)

**Main Beam SLT in the following lengths:** 225, 150, 375 (cm)

**Cover Strip in the following lengths:**

150, 75, 50, 37.5(cm)

**System Dimension:**

**With Drophead SFK, Main Beam SLT 225**

230 x 150 cm, slab thickness max. 40 cm

230 x 75 cm, slab thickness max. 80 cm

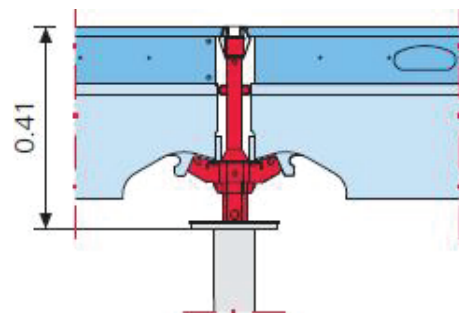
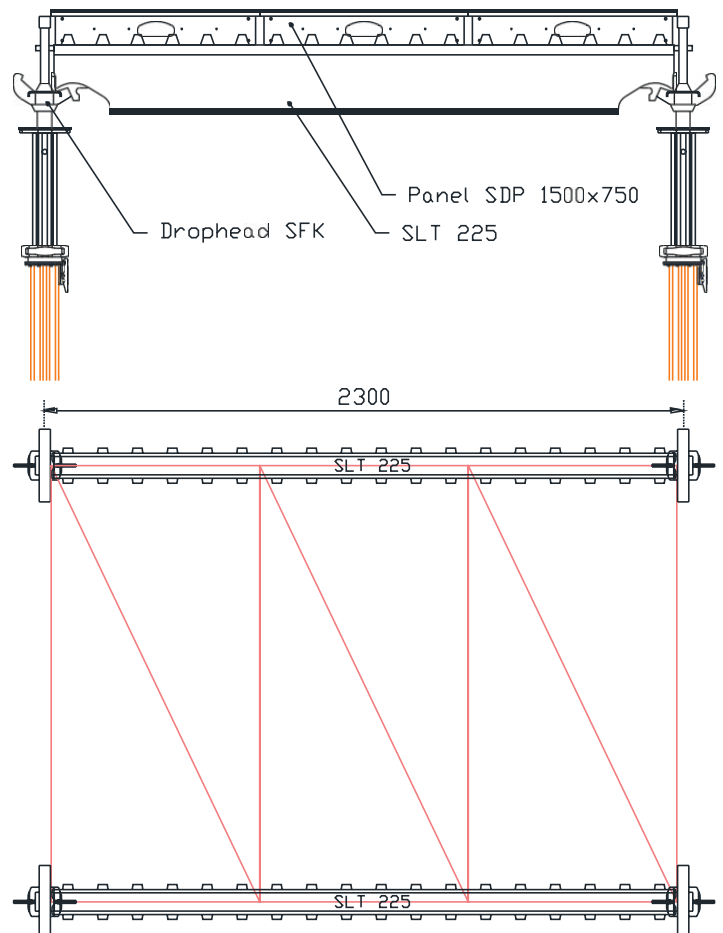
115 x 75 cm, slab thickness max. 95 cm

(with center support)

**With Drophead SFK, Main Beam SLT 150**

155 x 150 cm, slab thickness max. 48 cm

155 x 75 cm, slab thickness max. 95 cm



**Drophead**

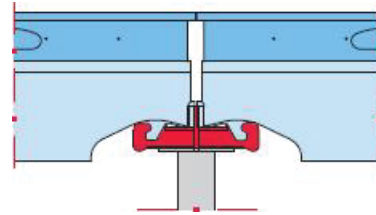
**With Prophead SSK, Main Beam SLT 225**

225 x 150 cm, slab thickness max. 40 cm

225 x 75 cm, slab thickness max. 80 cm

112.5 x 75 cm, slab thickness max. 95 cm

(with centre support)

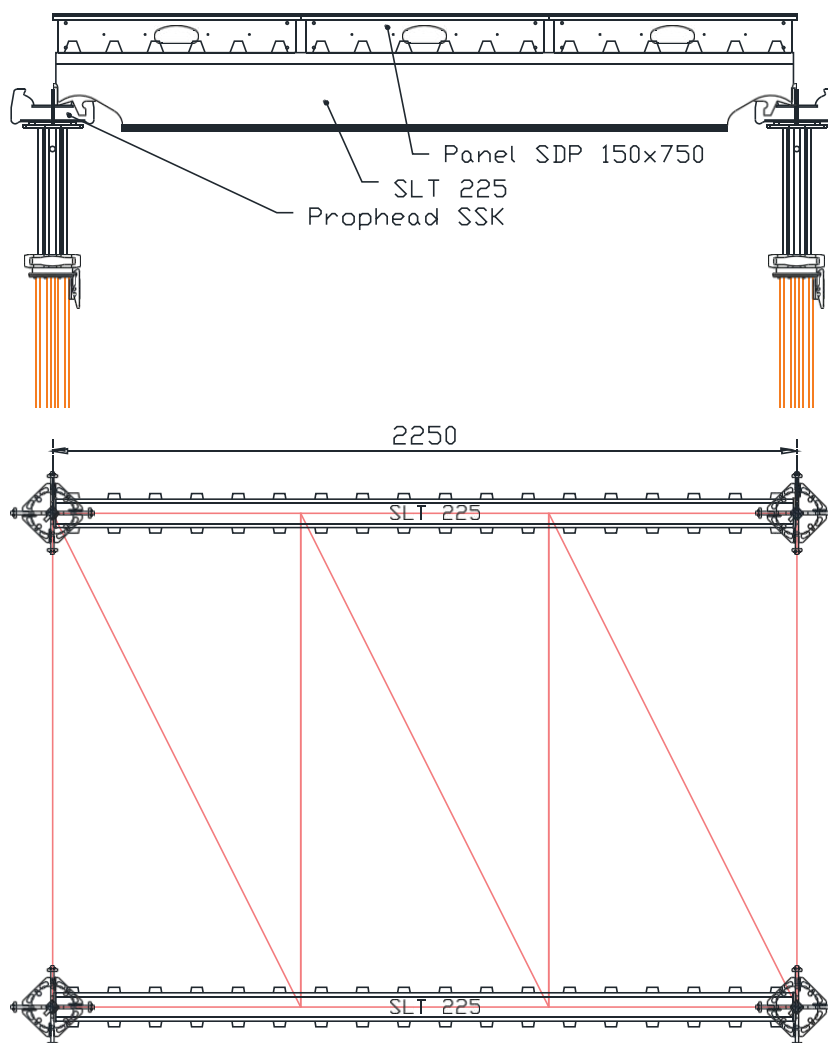


**Prophead**

**With Prophead SSK, Main Beam SLT 150**

150 x 150 cm, slab thickness max. 51 cm

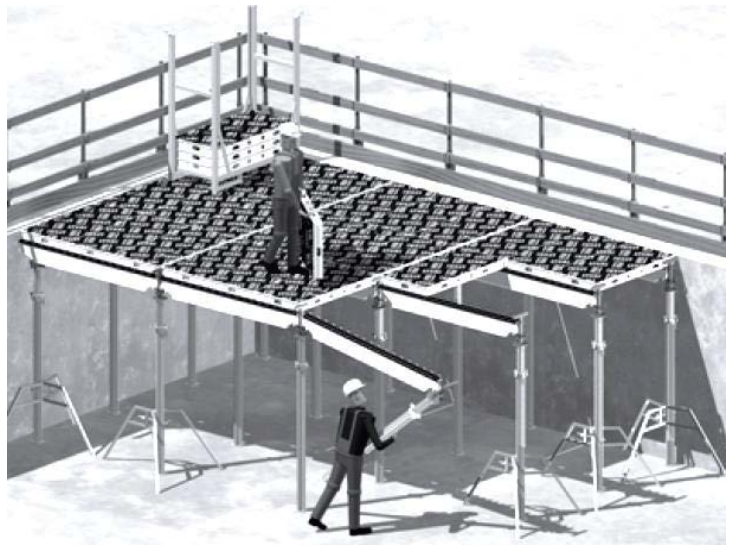
150 x 75 cm, slab thickness max. 95 cm



**The cost-effective slab formwork with numerous advantages for the user**

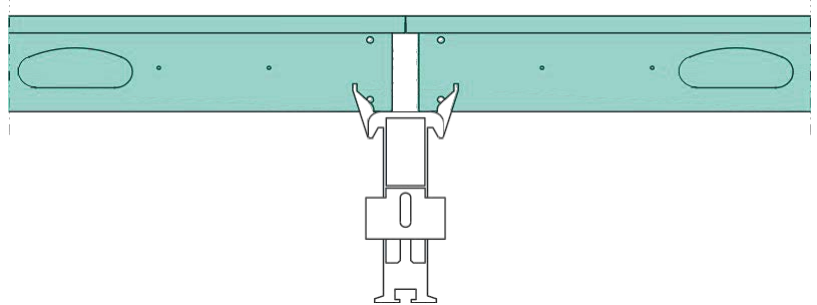
K-DECK forms slab thicknesses of up to 95 cm.

K-DECK offers a systematic erection sequence and safety features that rule out erection errors.



K-DECK panels shuttered from above.

The outward projecting teeth “catch” the panels. The panels clip in and lie securely in the rack.



The K-DECK system provides a high level of safety during erection.

That rule out erection errors. Handling is quickly mastered, even by personnel unfamiliar with this system.



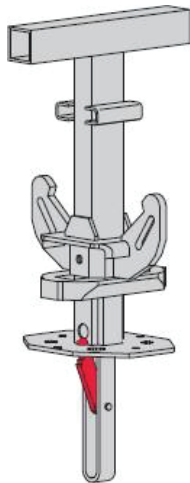
**K-DECK**

## Extremely fast head installation.

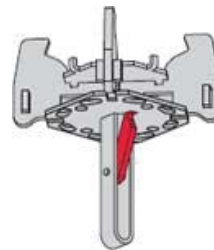
The K-DECK drophead and prophead are equipped with self-locking couplings. This means:

The head can be fitted without any time-consuming bolting, pinning or wedging. Simply place it and allow it to engage –that’s all there is to it! The head is now securely mounted.

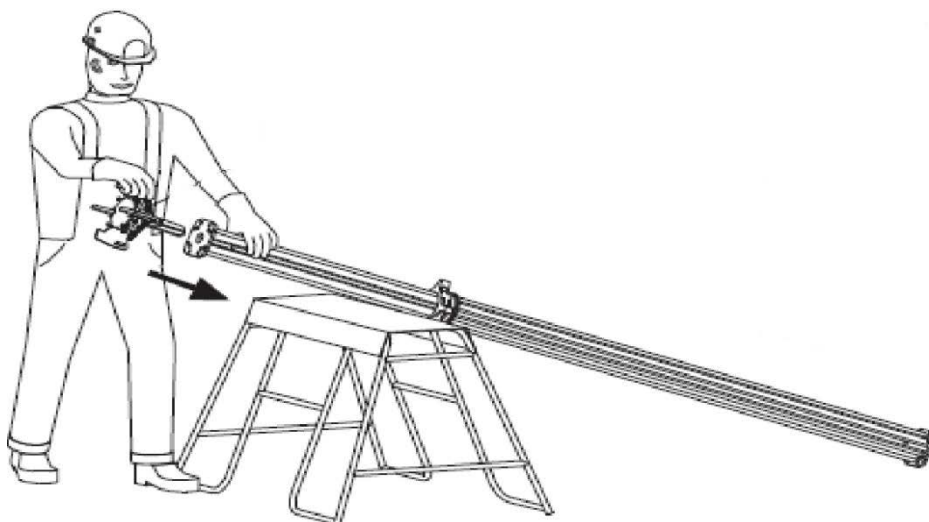
Removal is simply a matter of releasing the coupling and taking the head off. Thus, changing the slab props can be carried out quickly and efficiently for all slab heights.



**Drophead**



**Prophead**



## STRIKING WITH DROPHEAD

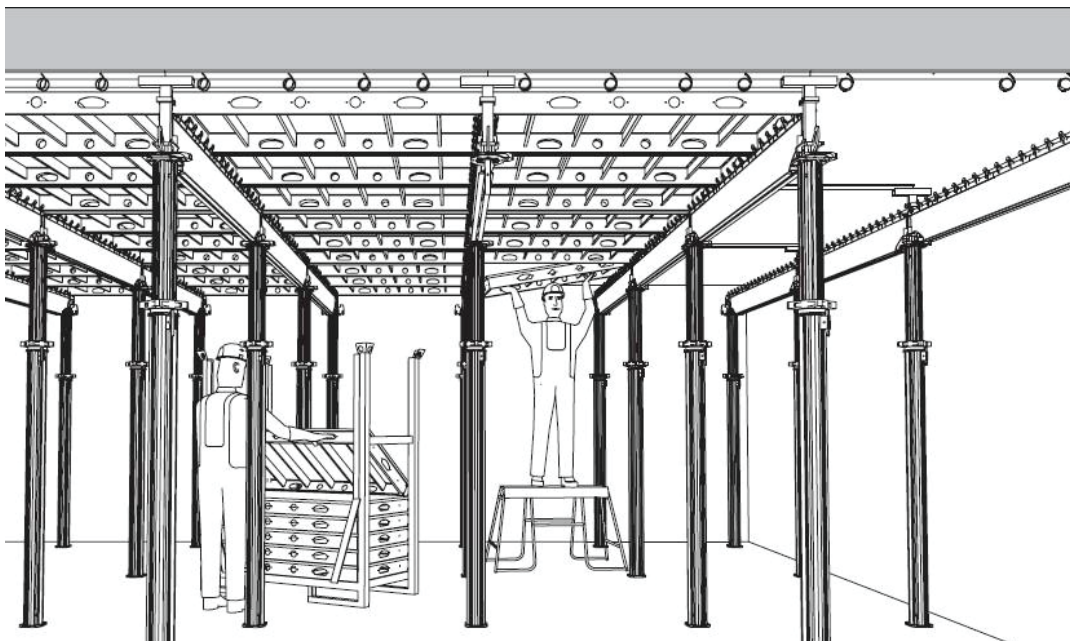
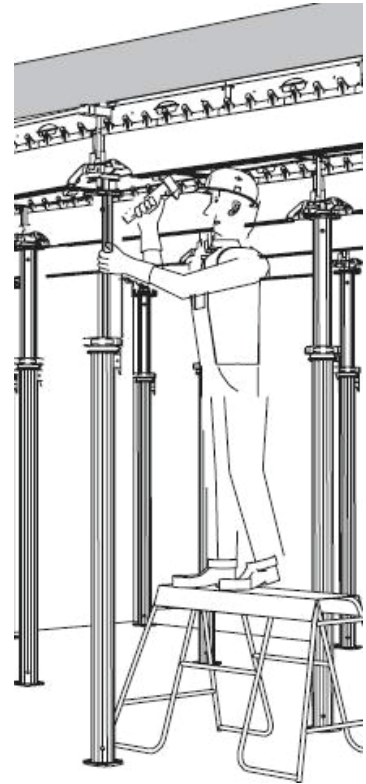
The drophead is released with a hammer blow causing all of the formwork to lower by 6 cm.

Panels and main beams can then be removed. The drophead props together with cover strips remain in position.

**Forming with the K-DECK drophead means fast concreting cycles with small quantities of on-site material requirements.**

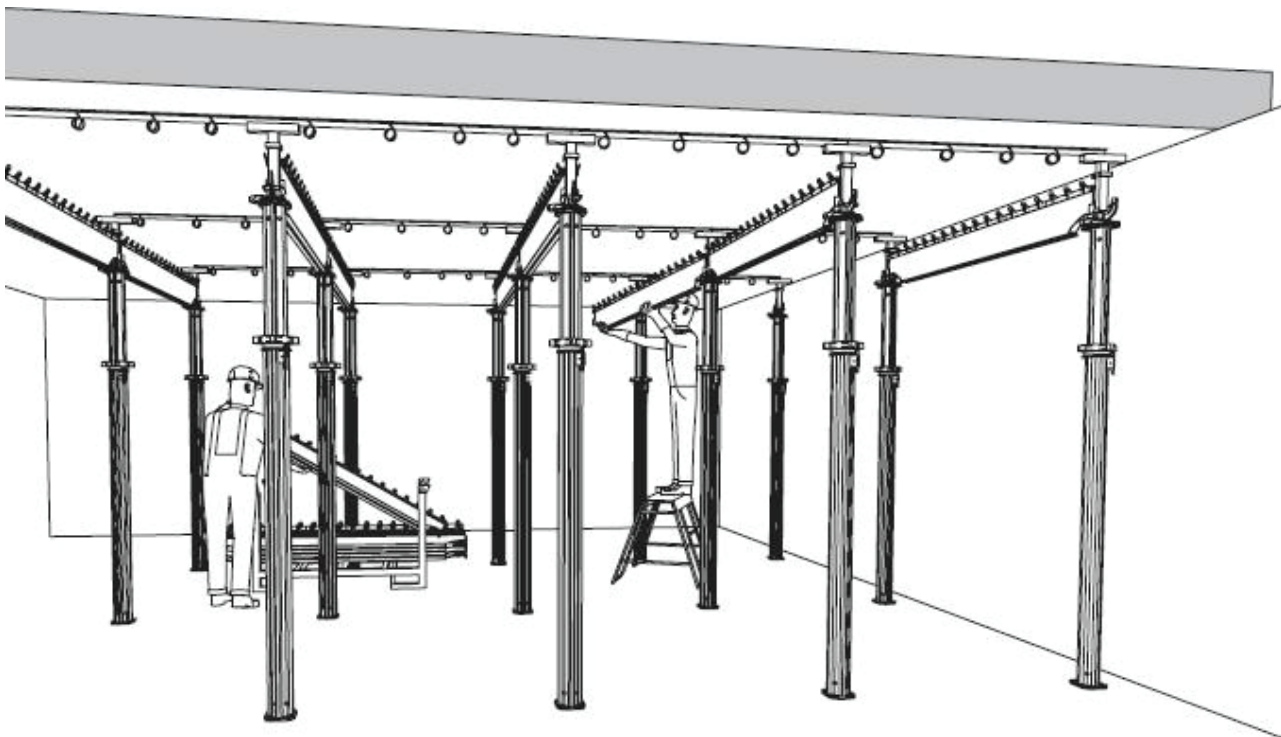
The drophead principle allows striking after only 1 day, depending on slab depth and concrete strength.

Striking is easier because the panels can be released from the concrete more easily after a short time.



The possibility of striking after a short time allows work to be carried out more flexibly (e.g. during bad weather or when personnel have free capacity).

The main beam cuts the number of props required. For an area of  $2.30 \times 1.50 = 3.45 \text{ m}^2$ , only 1 prop is needed. This corresponds to 0.29 props per square metre of slab.



Props on the edge or infill areas can be dismantled. For the new cycle, only around 70 % extra drophead props are required.

Only the props with drophead and cover strip remain after striking.

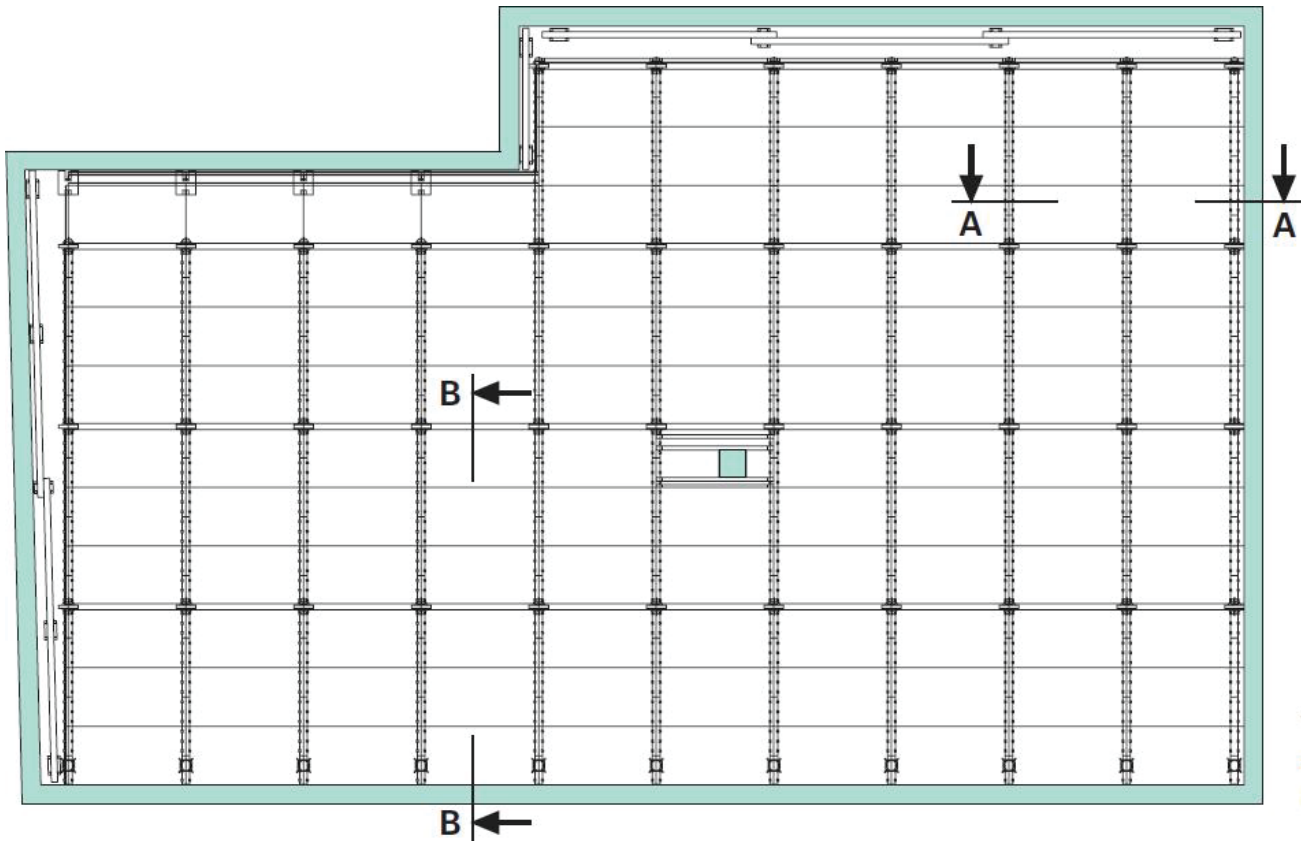
**K-DECK provides:**

**Benefit to you:**

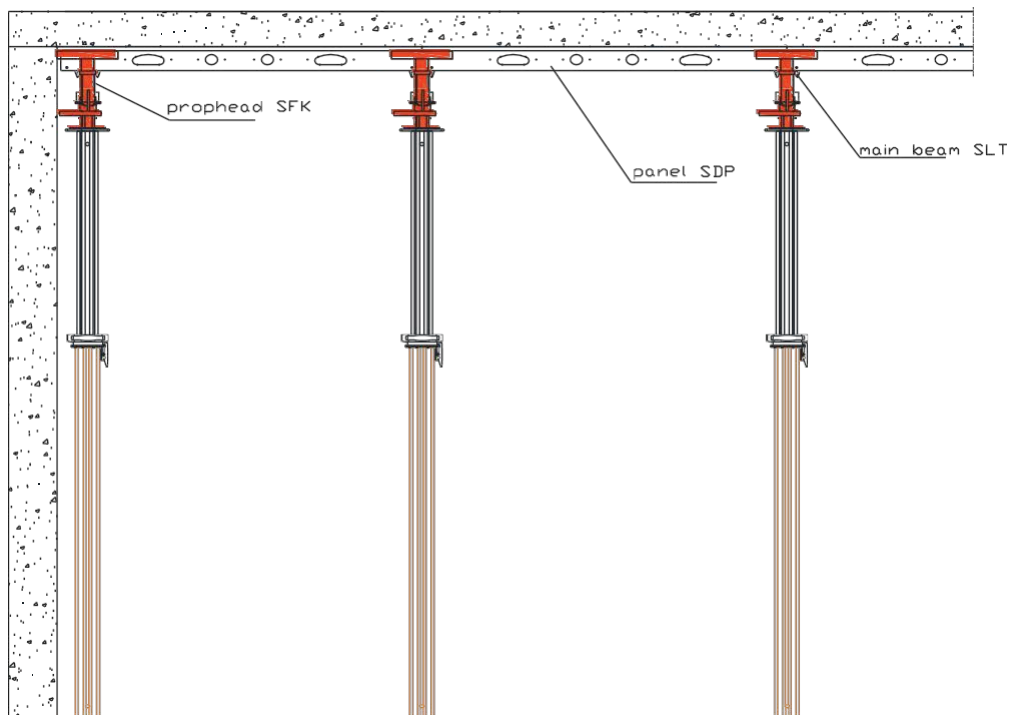
Main beams that reduce the number of props required.	Less props
Drophead principle	Earlier and easier striking
Powder coating, self-draining edges, plastic & profiles	Less cleaning
Individual components made of aluminium and weighing less than 15 kg	Easy and tireless shuttering and striking
Straight formwork line	Simple edge adjustment
Structurally-optimized system	Very accurate surfaces
Systematic erection sequence	Operating errors ruled out
Self-locking coupling	Quick mounting on the prop without screws or bolt

## The application of the K-DECK system

Typical application with wall return, angled wall junction and column to be formed.

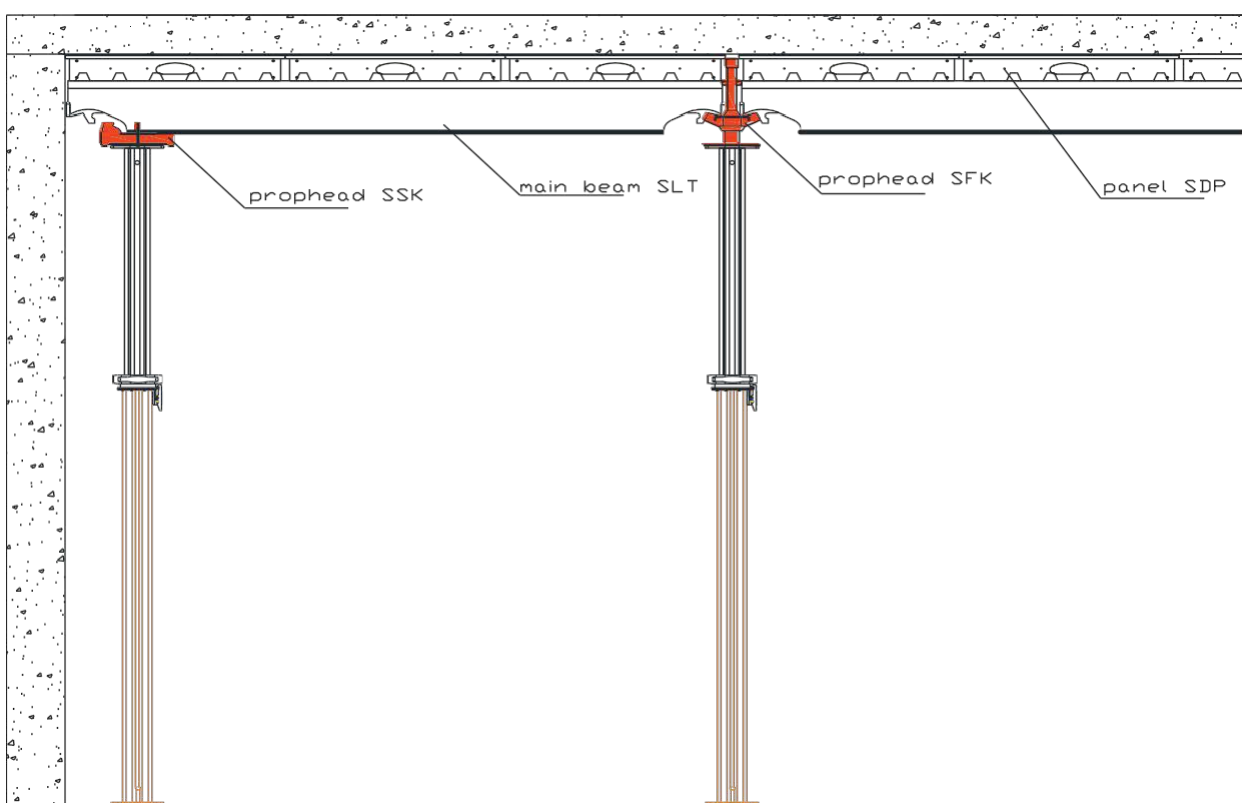


**Cross-section A-A :** The design principle with the panels lying on top of the main beam makes the wall junction with the main beam set back possible.



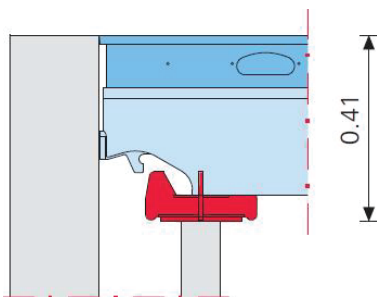
## Longitudinal section B-B :

Wall junction with prophead set back. The beam is securely mounted on the prophead.

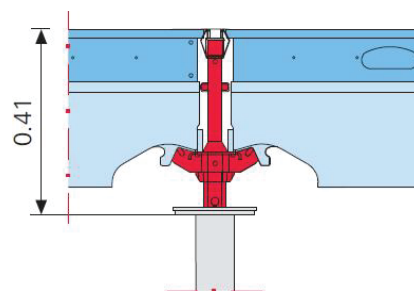


## An important advantage in application:

The extended length of the prop remains the same, irrespective of whether you are working with the drophead or the prophead set back at the wall junction.



Prophead set back at the wall junction.



Drophead

## Longitudinal infilling

For infilling up to 1.50 m, the formwork is simply continued with panels and prophead until the gap left can be closed with filler timbers.

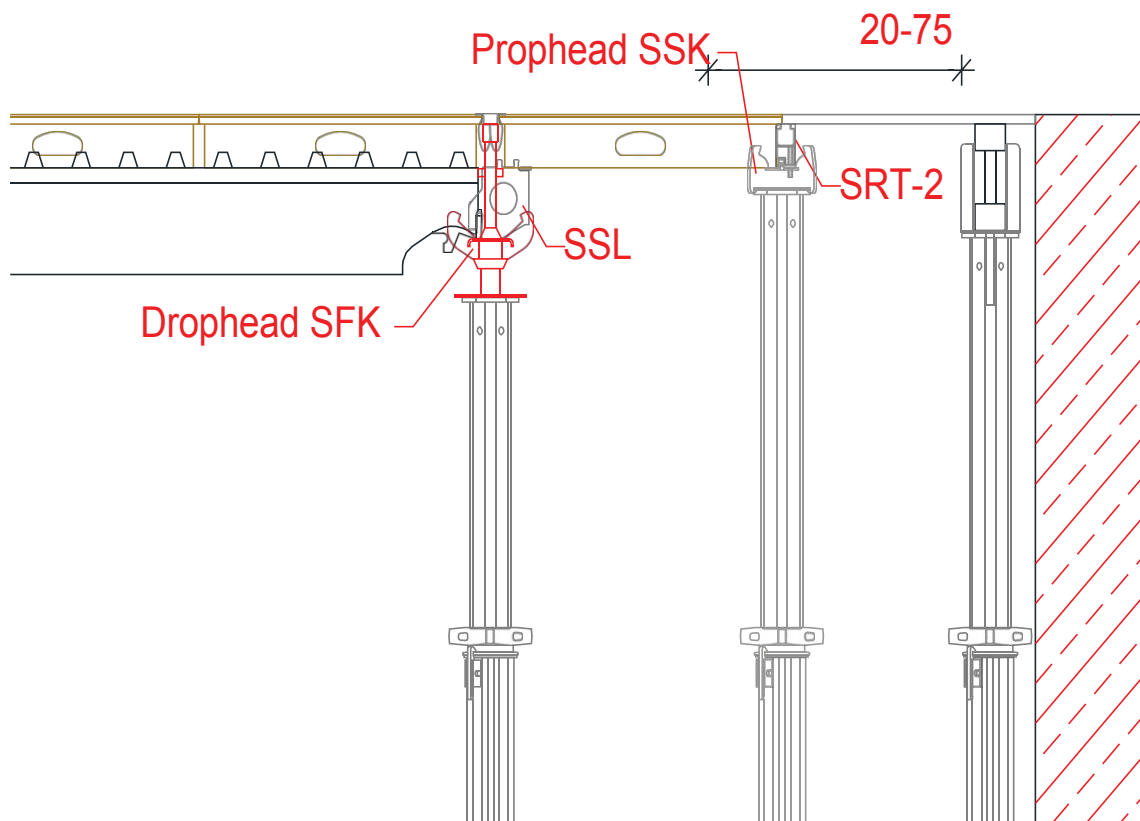


Transition from standard grid rectangle to infilling with the end support.

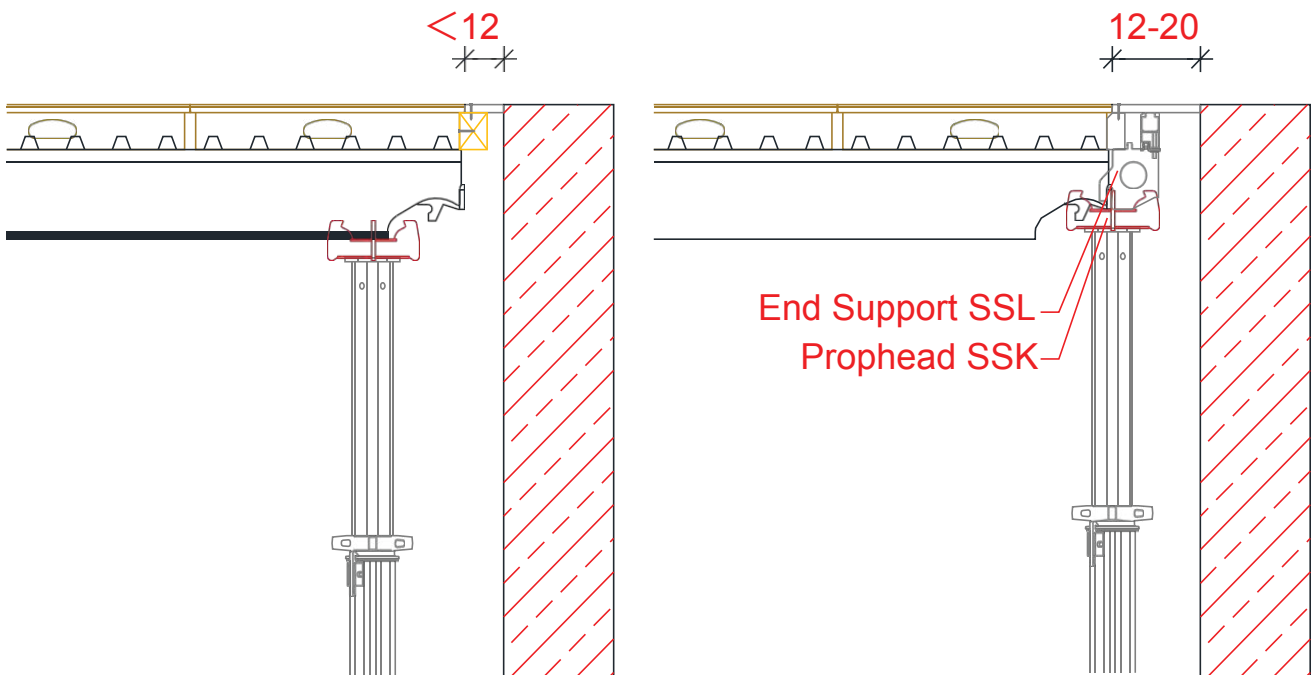
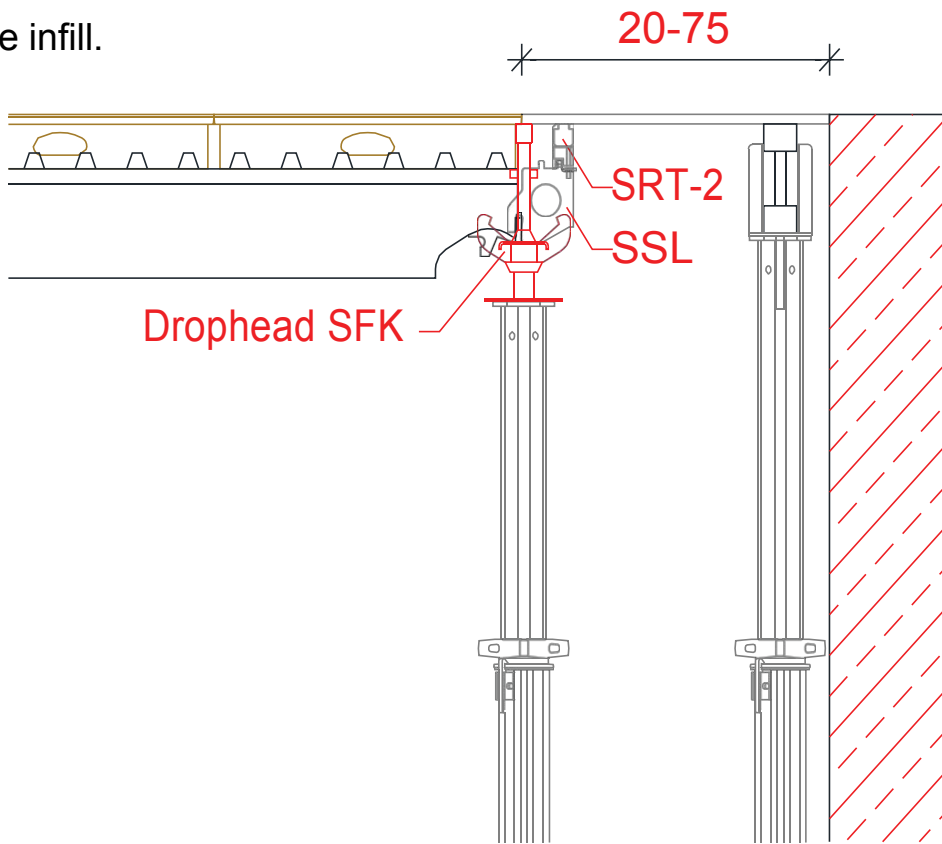
## Infilling lengths L:

≤ 2.25 m with main beam SLT 150 and appropriate infill

≤ 1.50 m with 1 panel 75 cm wide and appropriate infill



≤ 0.75 m panel with appropriate infill or with infill panel 37.5 cm wide and appropriate infill.

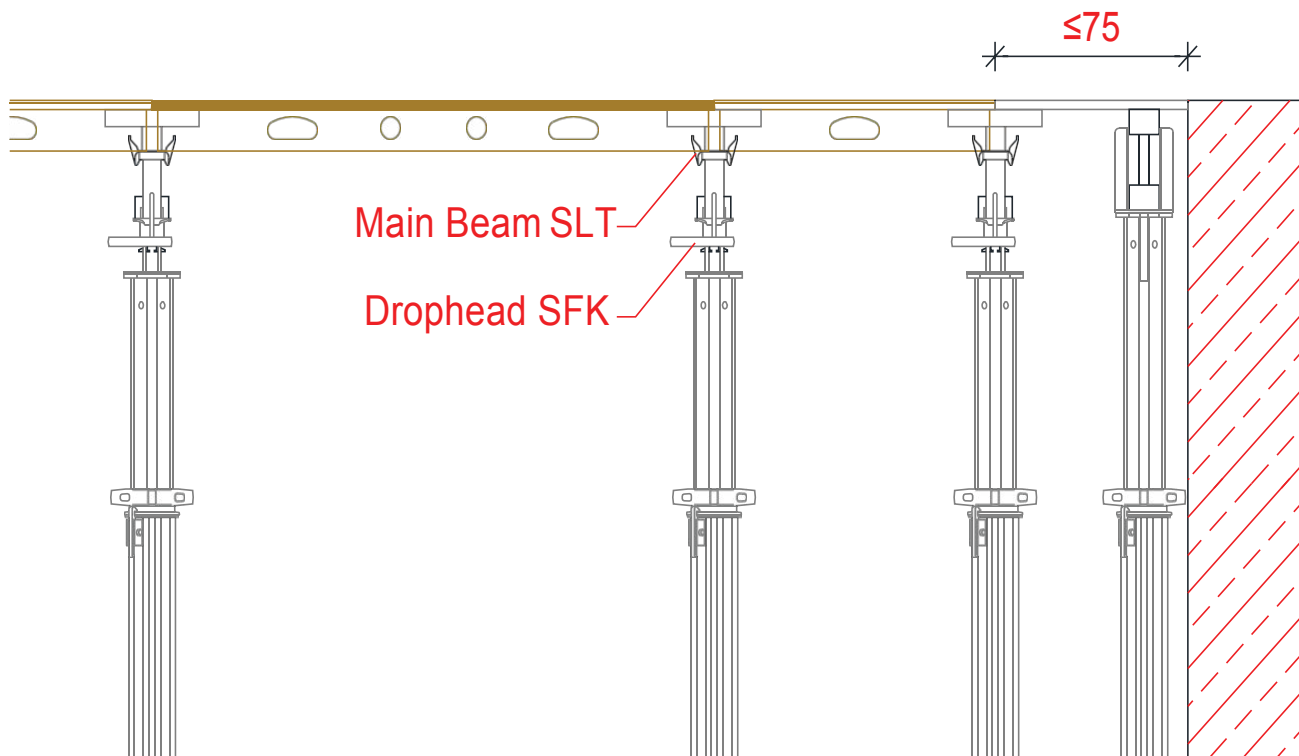


## TRANSVERSE INFILLING

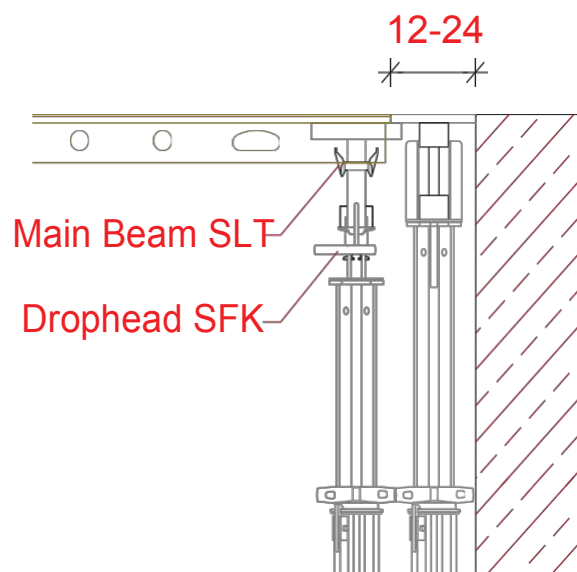
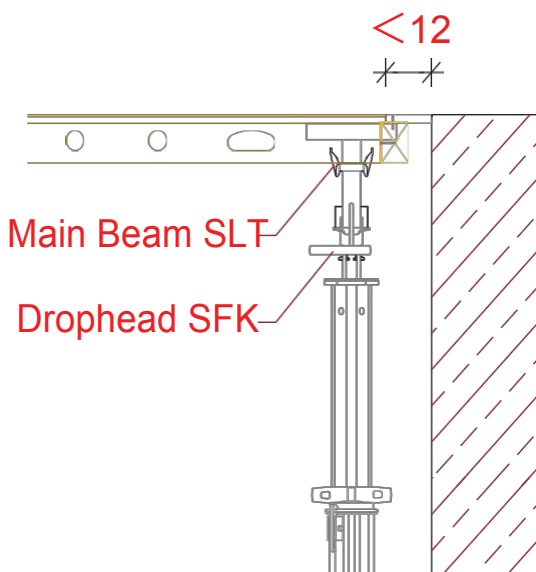
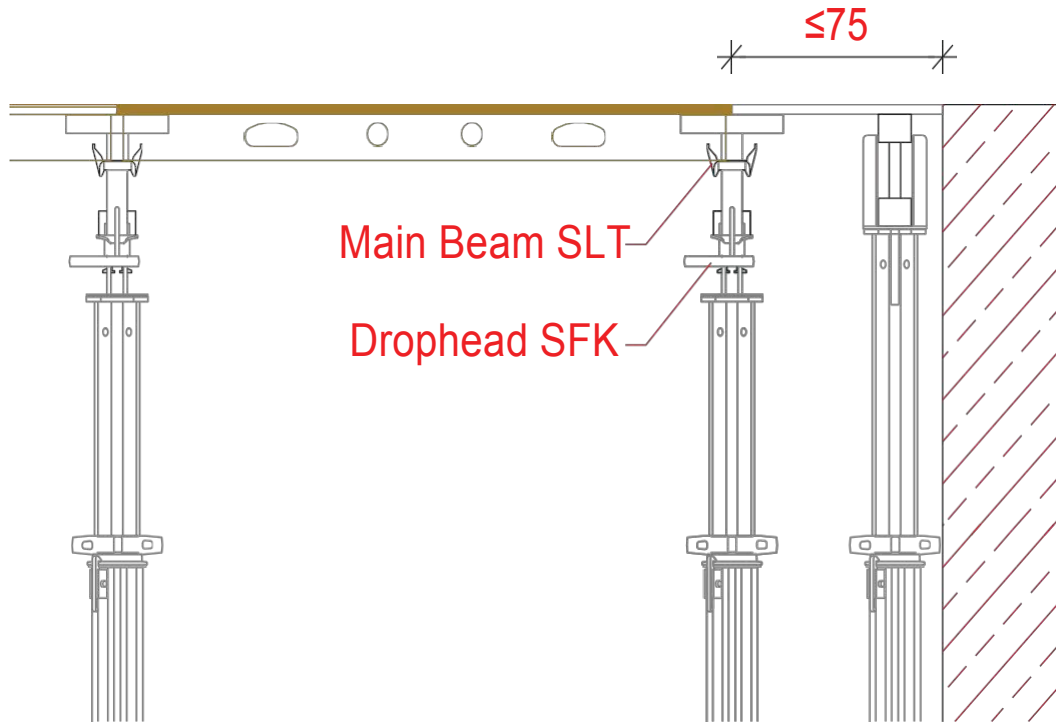
Transverse infilling or adaptation for angled walls is carried out in the same way as longitudinal infilling, using panels and prophead until the gap left can be closed with a filler plate. The panels can be turned in the other direction to achieve this.



Transverse infilling with 150 x 75 panel, SPH filler timber and filler plate.

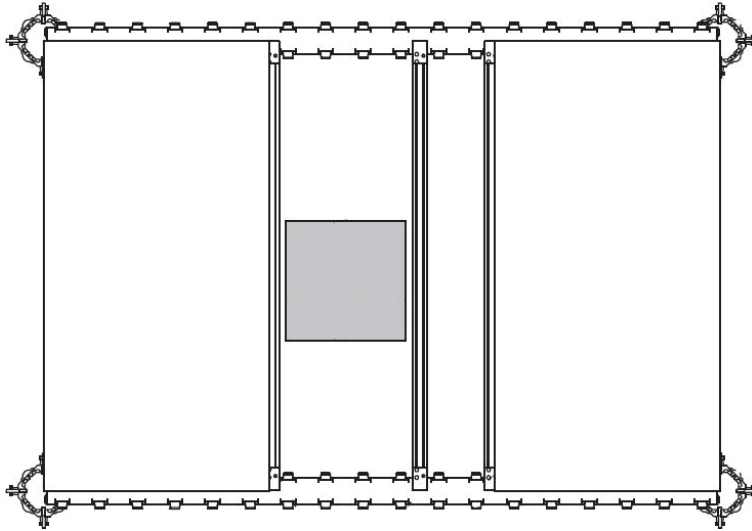


≤ 0.75 m panel with appropriate infill or with infill panel 37.5 cm wide and appropriate infill.



## SHUTTERING AROUND COLUMNS

With K-DECK edge beam SRT 150 or SRT 75.

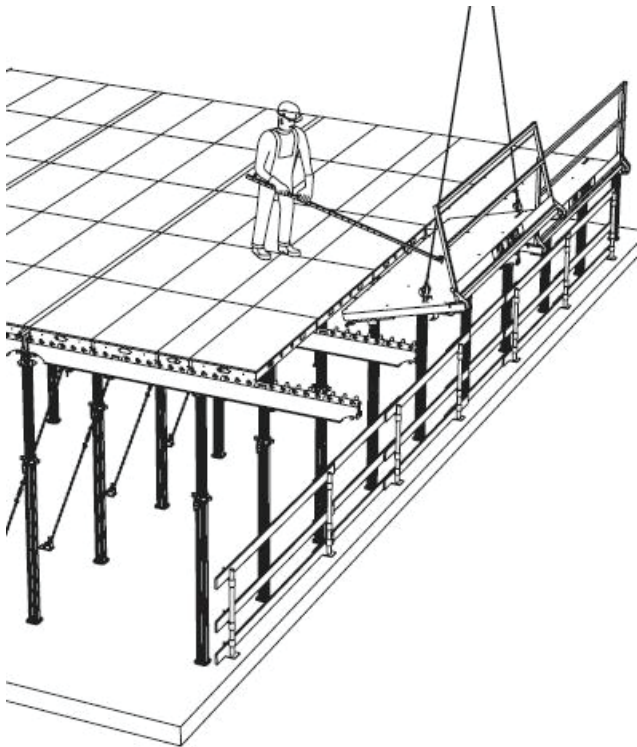


Formwork is taken around columns with a maximum edge length of 1.38 m in this way. If the edge beam is used, the maximum edge length is 63 cm.



Depending on the situation, the K-DECK edge beam is used only longitudinally, or longitudinally and laterally. When using the edge beams longitudinally and laterally, these must be installed in a turned position.

## PLATFORM AND GUARDRAILS

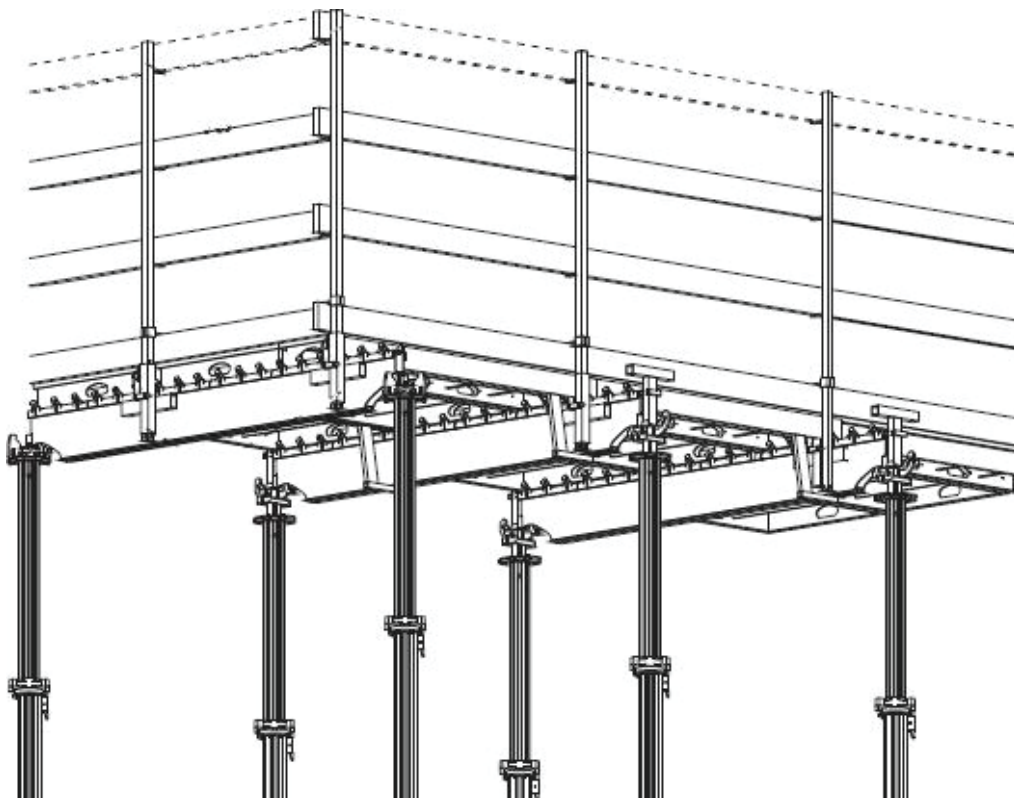


The K-DECK platform on the edge of the building saves using a safety scaffold.

Slab edge with guardrails.

Slab edges are formed with the cantilevered SLT 375 slab edge beam and the K-DECK Platform.

The platform is a prefabricated foldable scaffold platform, permissible load of 150 kg/m<sup>2</sup>. It secures the open building edges of the K-DECK slab formwork.



## STORAGE AND TRANSPORTATION

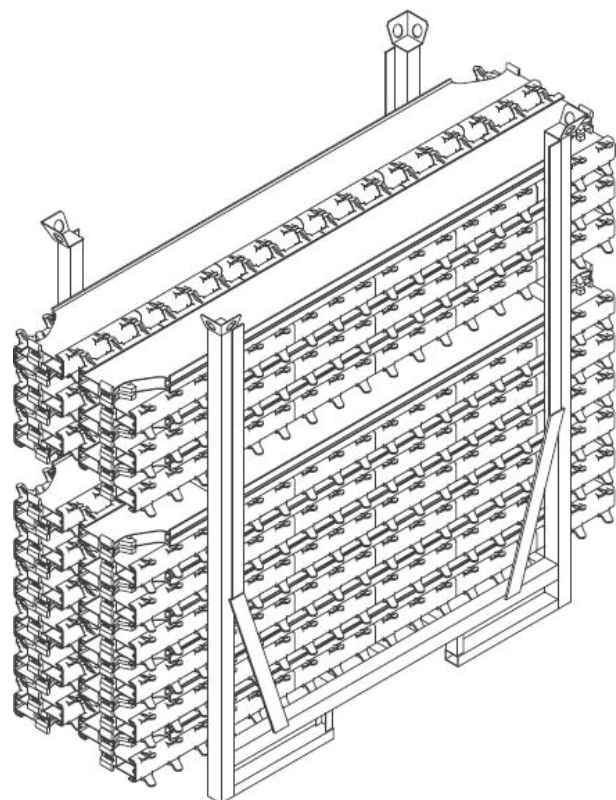
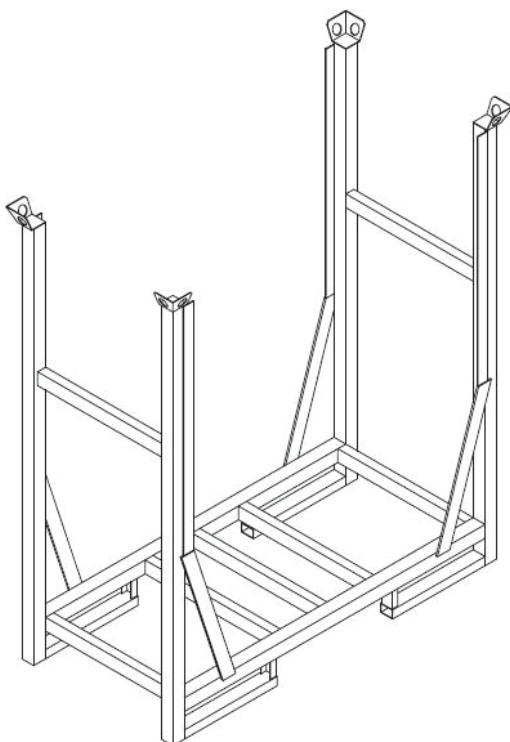
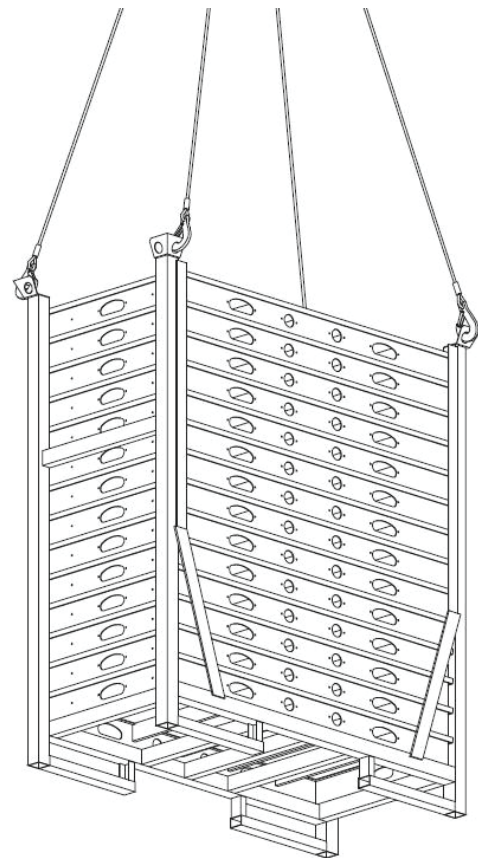
Formwork erection will be even faster if there is order on site and as few crane lifts as possible.

The K-DECK pallet can be shifted with the crane or moved with a pallet truck.

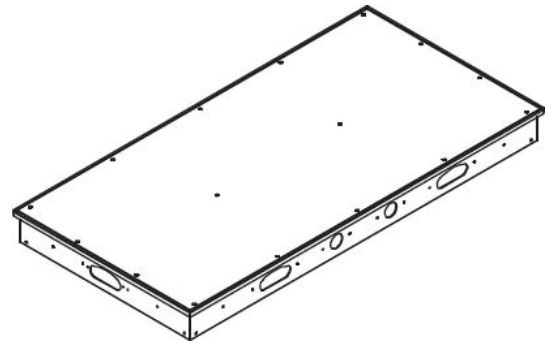
The pallet is equally suitable for forklift trucks when dispatching or in the yard.

All K-DECK pallets are hot-dip galvanized and can be stacked.

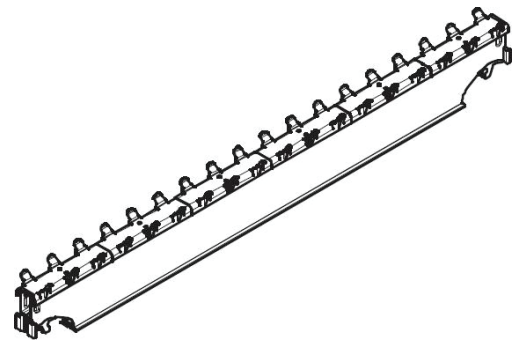
K-DECK Pallet SD filled with 14 panels 150 x 75. The pallet lifting truck is used for moving operations.



Description L x B	Item no.	Weight kg
Panel SDP 1500x750	CSLSD81575	15.34
Panel SDP 1500x500	CSLSD81550	11.61
Panel SDP 1500x375	CSLSD81537	9.75
Panel SDP 750x750	CSLSD87575	8.58
Panel SDP 750x500	CSLSD87550	6.38
Panel SDP750x 375	CSLSD87537	5.32

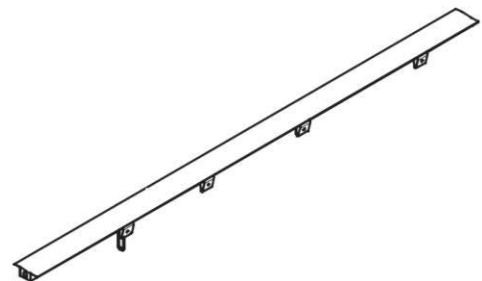


Description L	Item no.	Weight kg
Main Beam SLT 150	CSLMD00150	9.41
Main Beam SLT 225	CSLMD00225	15.37
Main Beam SLT 375	CSLMD00375	25.40



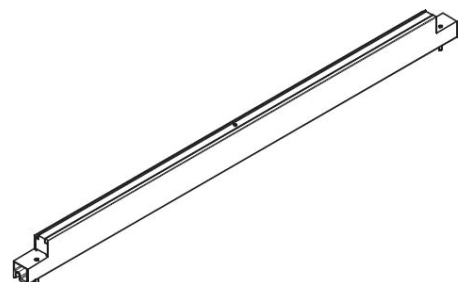
Description L	Item no.	Weight kg
Cover Strip SAL 150	CTAQDP0001	1.73
Cover Strip SAL 75	CTAQDP0002	0.85
Cover Strip SAL 50	CTAQDP0003	0.60
Cover Strip SAL 37.5	CTAQDP0004	0.45

Cover strip made of plastic for 21 mm formlining.

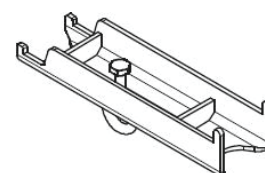
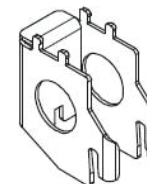
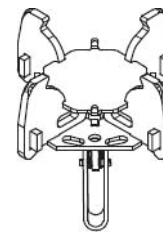
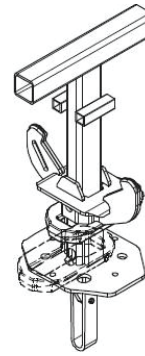


Description L	Item no.	Weight kg
Edge Beam SRT-2 150		5.80
Edge Beam SRT-2 75		2.75

For longitudinal and transverse infilling as well as forming around columns. For compensations with 21 mm form-lining.



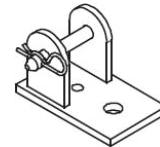
Description	Item no.	Weight kg
Drophead SFK  With self-locking coupling. Supports main beam as well as cover strip or form-lining. Lowering range 6 cm. For 21 mm form-lining.	CSAZD00001	6.30
Prophead SSK  With self-locking coupling. Supports panel, main beam, edge beam and filler timber.	CSAPD00001	3.86
End Support SSL  For transition to compensation. For connecting to the Drophead SKF.		2.14
Panel Clip SPK  Fixes panels on main beam.		0.13
Table Connector STV 2.59  For assembling K-DECK slab tables. Also used for mounting intermediate props to the main beams.		



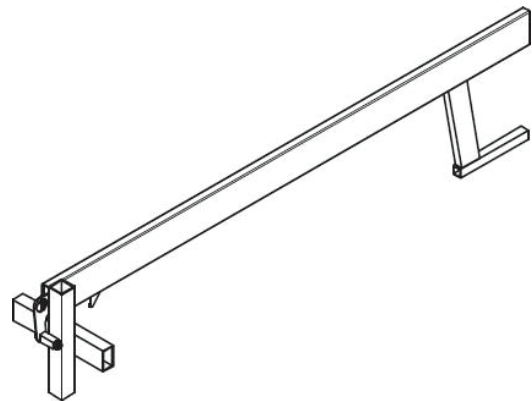
Description	Item no.	Weight kg
Tension Sleeve SAO		0.99
For bracing cantilevered main beams.		



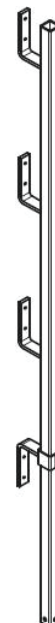
Description	Item no.	Weight kg
Base Plate RS		1.83



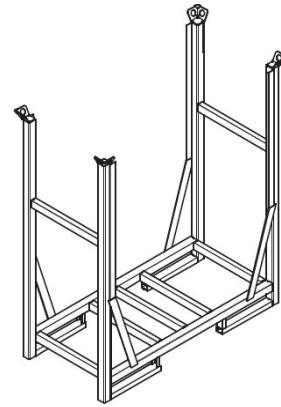
Description	Item no.	Weight kg
Guardrail Holder SGH		4.76
Alu		
For assembling a guardrail with K-DECK.		



Description	Item no.	Weight kg
Guardrail Post SGP		6.15



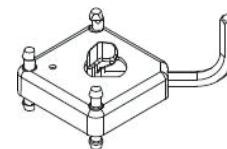
Description	Item no.	Weight kg
Pallet SD 150 x 75		77.00
For stacking and transportation of 14 K-DECK Panels 150 x 75.		



Description	Item no.	Weight kg
MULTIPROP MP 625	CSGLD60625	34.80
MULTIPROP MP 480	CSGLD60480	25.50
MULTIPROP MP 350	CSGLD60350	20.20
MULTIPROP MP 250	CSGLD60250	16.10
MULTIPROP MP 120	CSGLD60120	10.75
<b>min. L</b>	<b>max. L</b>	
800	1200	
1450	2500	
1950	3500	
2600	4800	
4300	6250	



Description	Item no.	Weight kg
Connector MPV-2		1.05
For connecting 2 MULTIPROP slab props.		



Description	Item no.	Weight kg
Frame MRK 62, 5	CRGHD00625	6.20
Frame MRK 75	CRGHD00750	6.90
Frame MRK 90	CRGHD00900	7.70
Frame MRK 120	CRGHD01200	8.60
Frame MRK 137, 5	CRGHD01375	9.20
Frame MRK 150	CRGHD01500	9.60
Frame MRK 201, 5	CRGHD62015	11.60
Frame MRK 225	CRGHD62250	12.30
Frame MRK 230	CRGHD62300	12.50
Frame MRK 237	CRGHD62370	12.80
Frame MRK 266	CRGHD62660	14.00
Frame MRK 296	CRGHD62960	14.90

