



SKALA

Anchor Load Cell

Anchor Load Cell KN

Model M, MF



The Anchor Load Cells with Manometer (pressure gauge) for direct readings in kilonewton (kN) are used to monitor e. g. preload force of tiebacks, rock bolts and retaining walls reliable and permanently.

The anchor load cell is characterized by a pad with a predefined surface made of two discs with high bending strength. Ring grooves at the edges enable the discs to move slightly. The pressure chamber in between is filled with hydraulic liquid and connected directly to the Manometer.

This combination allows a conversion of hydraulic pressure into load/force. The small amount of hydraulic liquid in the closed chamber of the load cell, provide very accurate measurements with a low influence of temperature.

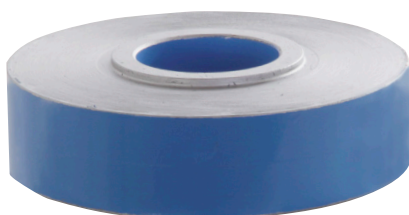


Fig.: load distribution plate

TECHNICAL DATA

Anchor Load Cell with Manometer

Temperature Error:	0,06 % / K
Temperature Range:	-30 °C to 60 °C
Measuring Range:	250 to 5000 kN
Over Range:	min. 20 % f.s.
Accuracy of Manometer:	10 kN class 1,0 ±1 %
Protection Class:	IP 68

Advantages

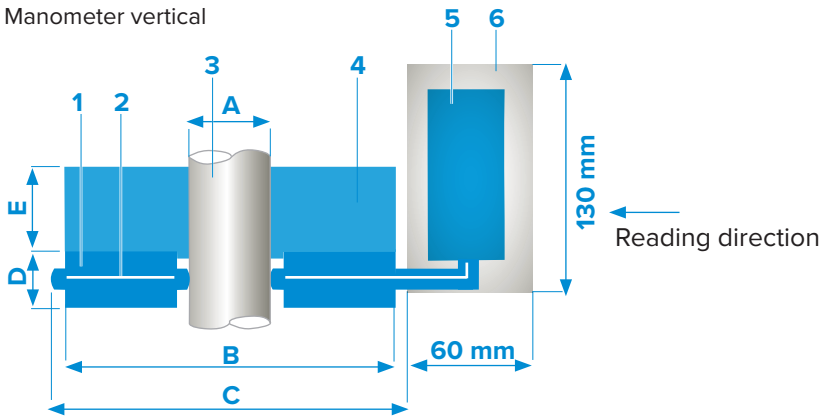
- hydraulic measuring principle
- defined contact area/surface
- easy installation
- very robust design
- low sensitivity to temperature
- low height
- direct readings in kilonewton
- linear measuring method

Load Distribution Plates

In order to ensure that the applied force on the load cell is evenly spread we are offering additional load distribution plates in various designs. Customized solutions are available on request.

MODEL M

Manometer vertical

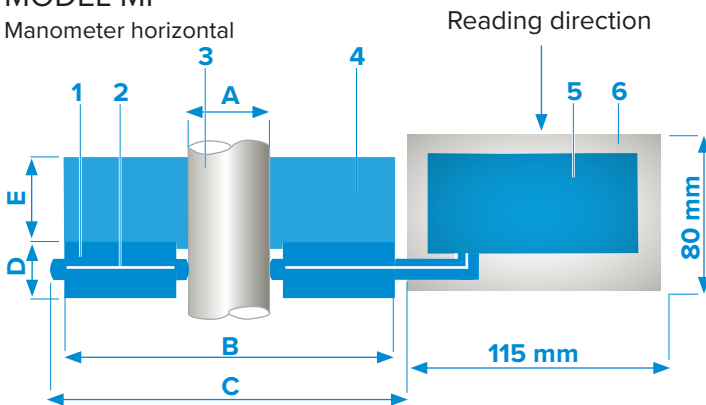


SYSTEM AND DESIGN

1. Piston Pad
2. Hydraulic Liquid
3. Anchor
4. Distribution Plate
5. Manometer
6. Protective Cover

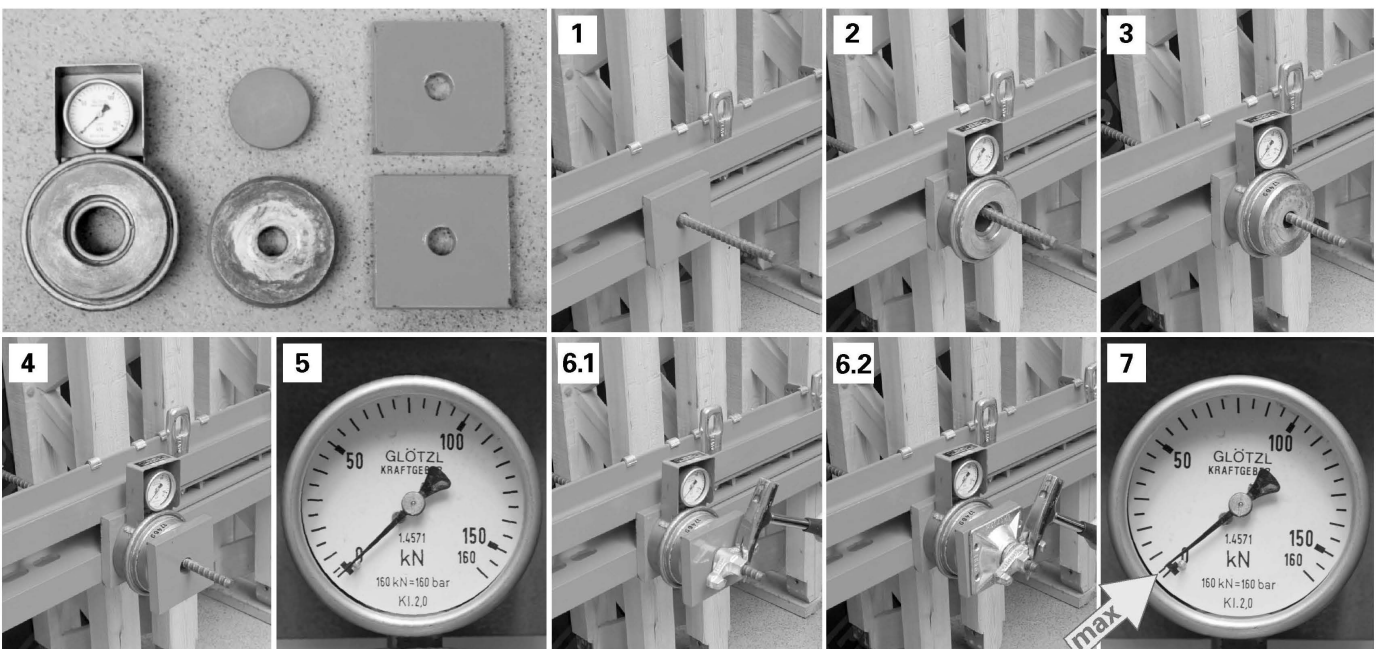
MODEL MF

Manometer horizontal



Type KN M or MF	Load (kN)*		Dimensions (mm)					Weight (kg)	
	nom	max	A	B	C	D	E	Load Cell	Cell + Distribution plate (P)**
KN 250 A35	250	300	35	123	144	30	27	3,0	5,3

Hydraulic cell for anchor load measurement;
 direct indication via manometer class 1.0;
 measuring range: 250 kN (+ 20 % overload capacity);
 center hole diameter: A = 35 mm;
 inclusive 1 load distribution plate;



SKALA

S O L U T I O N S

SKALA ACCESSORIES

QATAR

Doha, Qatar

KUWAIT

Hawla, Kuwait

LEBANON

Antoura, Lebanon

KSA

Riyadh, KSA

UAE

Dubai, UAE

IVORY COAST

Abidjian, Ivory Coast

ROMANIA

Lasi, Romania

KYRGYZSTAN

Bishkek, Kyrgyzstan

INTERNATIONAL

www.skalasolutions.com

info@skalasolutions.com

+974 55709628